

Former Powertrain Plant

56 Chevrolet Road
Massena, New York



ST. LAWRENCE COUNTY
INDUSTRIAL DEVELOPMENT AGENCY
(315) 379-9806
www.SLCIDA.com



Lot Specifications

Acreage	217.2
Zoning	Industrial

Access

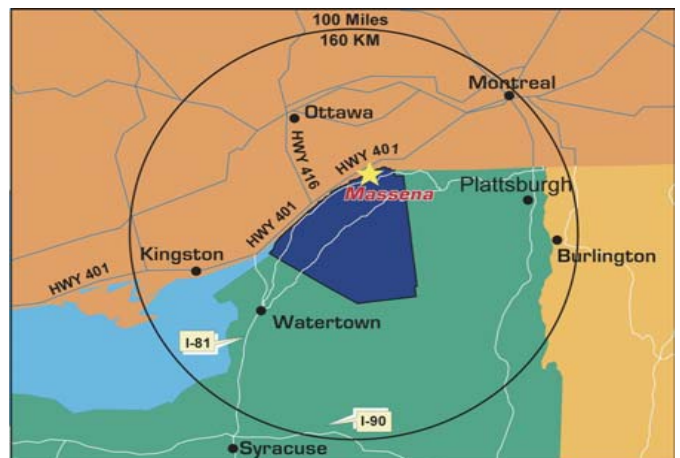
Highway	State Route 37
Miles to Highway	(0.2 miles)
Interstate	I81 & I87
Miles to Interstate	(80 miles) & (70 miles)
Road	Adequate Access
Rail	CSX Railway
Shipping	St. Lawrence Seaway
Port	Ogdensburg (42 miles)
Airport	Massena International (10 miles)

Utilities

Electric	Massena Electric Dept and New York Power Authority
Water	Available at Site
Sewer	Available at Site
Natural Gas	St. Lawrence Gas
Telecom	Available at Site

Property Owner

RACER Trust



Situated on the Canadian border in Northern New York, in close proximity to major markets in the Northeastern United States and in the Montreal-Toronto corridor of Canada.

- Less than 10 miles from Highway 401 in Canada
- Largest freight system in the Northeast-Midwest portion of the U.S. operating in 15 states and Canada
- Low-cost power programs available for qualified prospects
- Fully operational Storm Water Management